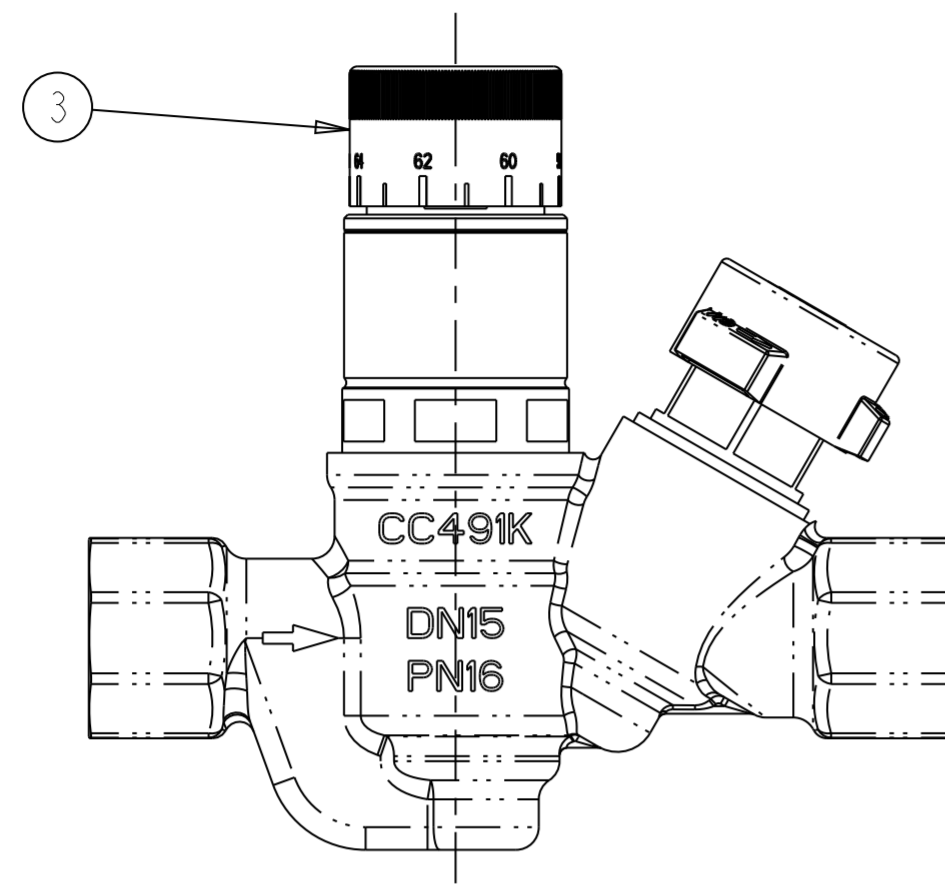


DO NOT SCALE

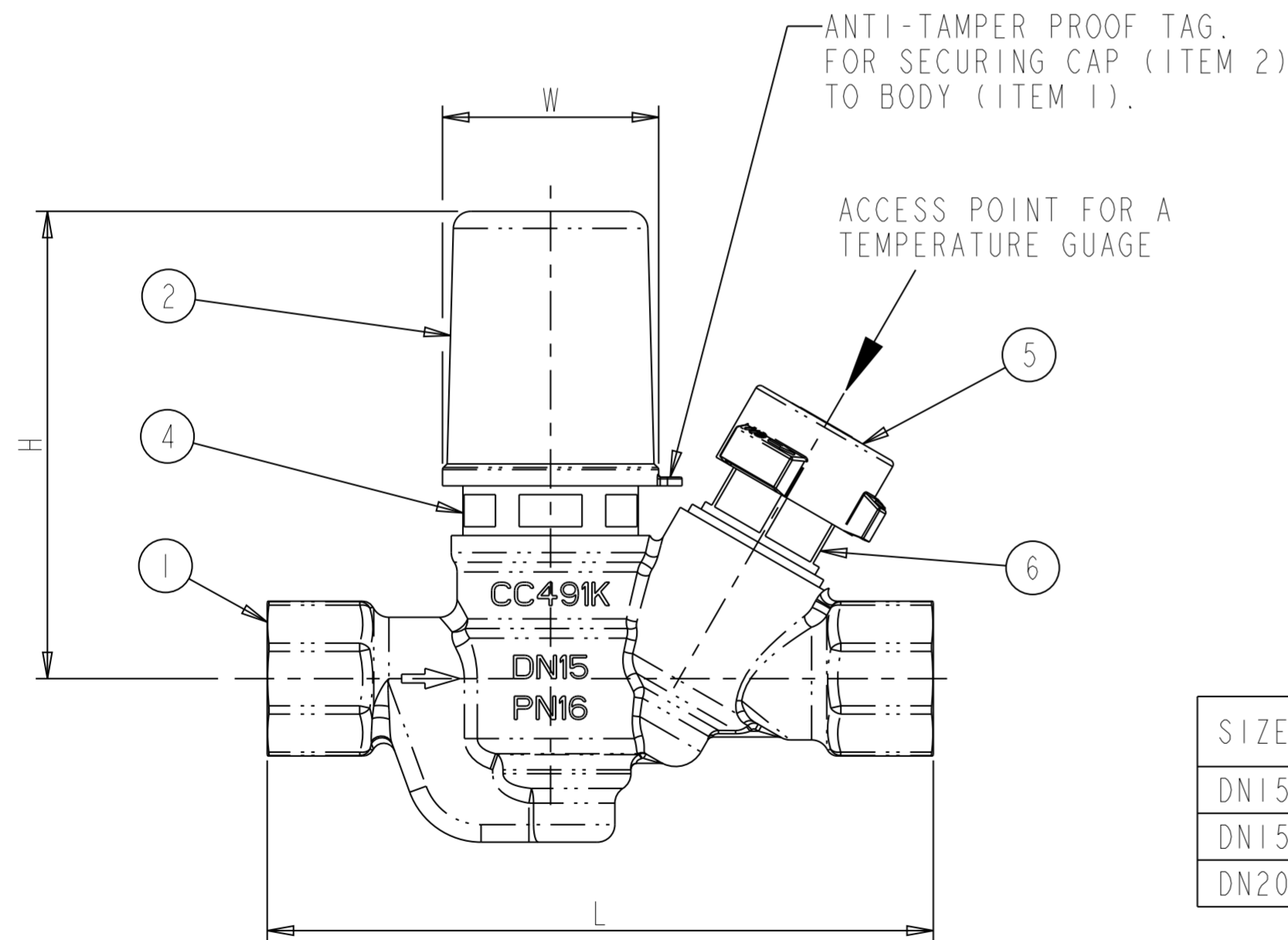
ALL DIMENSIONS IN MM UNLESS STATED OTHERWISE

IF IN DOUBT ASK

UNCONTROLLED COPY



VIEW WITH PROTECTION CAP
(ITEM 2) REMOVED



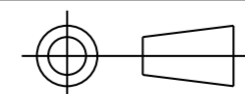
ITEM	PART NAME	MATERIAL & SPECIFICATION
1	BODY	BRONZE TO BS EN 1982 CC491K
2	PROTECTIVE CAP (REMOVABLE)	POLYPROPYLENE
3	TEMPERATURE ADJUSTING CAP - THERMAL UNIT	NYLON 6
4	BONNET & ASSOCIATED PARTS - THERMAL UNIT	DZR BRASS TO BS EN 12164 CW602N
INT	STEM - THERMAL UNIT	STAINLESS STEEL TO EN10088-3 1.4305 (BS970 303S31)
INT	BODY SEAT - THERMAL UNIT	DZR BRASS TO BS EN 12164 CW602N
INT	PLUG - THERMAL UNIT	DZR BRASS TO BS EN 12164 CW602N
INT	BUSH - THERMAL UNIT	DZR BRASS TO BS EN 12164 CW602N
INT	O-RING SEALS - TO BS1806 - THERMAL UNIT	RUBBER - EPDM (TIMO 70) WRAS APPROVED
5	HANDWHEEL - ISOLATION UNIT	NYLON 6
6	BONNET - ISOLATION UNIT	DZR BRASS TO BS EN 12164 CW602N
INT	STEM - ISOLATION UNIT	DZR BRASS TO BS EN 12164 CW602N
INT	BODY SEAT - ISOLATION UNIT	PTFE (FE1000) WRAS APPROVED
INT	STEM SEAT RETAINER - ISOLATION UNIT	DZR BRASS TO BS EN 12164 CW602N
INT	O-RING SEALS - TO BS1806 - ISOLATION UNIT	RUBBER - EPDM (TIMO 70) WRAS APPROVED

INT = INTERNAL PARTS IN CONTACT WITH FLUID (NOT SHOWN)

SIZE	FLOW	PRODUCT CODE	L mm	H mm	W mm	FEMALE END CONNECTIONS	WEIGHT (KG)
DN15	LOW	FIG.2910	114	80	∅ 37	PIPE THREAD EN 10226 Rc 1/2"	0.76
DN15	STANDARD	FIG.2900	114	80	∅ 37	PIPE THREAD EN 10226 Rc 1/2"	0.76
DN20	STANDARD	FIG.2900	126	80	∅ 37	PIPE THREAD EN 10226 Rc 3/4"	0.88

© CRANE LTD.

THIS DRAWING IS A COPY AND IS NOT SUBJECT TO REVISION CONTROL - CHECK ISSUE BEFORE USE



THIRD ANGLE PROJECTION

Hattersley

STATUS
Concept

VERSION 1.1

MATERIAL & STANDARD

SEE TABLE

SCALE 1:1 SHEET NO. 1 OF 1

THERMAL CIRCULATION VALVE
PRODUCT DRAWING
FIG.2910 AND FIG.2900

DRAWING NUMBER NW/A2/146697 REV A

INITIAL ISSUE
AJC
05.12.12

DRAWN AJC
CHECKED
APPROVED

24.09.12

REV A