

Fig. 775 & 776 Automatic Air Vent



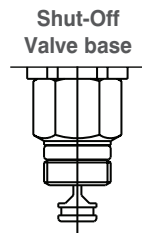
FEATURES & BENEFITS

- Removes inevitable potentially dangerous air trapped in system
- Simplifies the venting process
- Saves time and costs
- WRAS approved to 85°C
- A shut-off valve option is available in size 1/2 inch. Please specify when ordering Fig. 776



MATERIAL SPECIFICATION

Component	Material	Specification	
		BS EN	ASTM
Body	Brass	12165 CW617N	B455 C37710
Cover	Brass	12165 CW617N	B455 C37710
Float	Polypropylene	-	-
Seals	EPDM	-	-
Plastic Cap	Plastic	-	-
Hygroscopic Cap	Brass	12165 CW614N	B455 C38500
Shut-Off Valve	Brass	12165 CW614N	B455 C38500
Obturator Stem	Brass	12165 CW614N	B455 C38500



NOTE

Fig. 776 version with Shut-Off Valve base allows the Automatic Air Vent to be removed without draining the system

DIMENSIONAL DRAWINGS

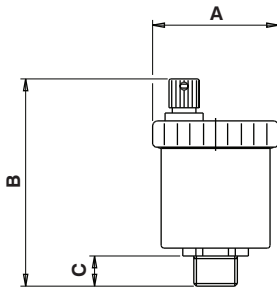


Fig. 775
3/8" - 1/2"

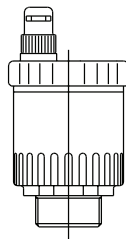


Fig. 775
3/4" - 1"

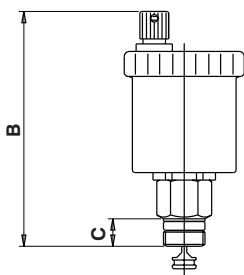


Fig. 776 with Shut-Off Valve 1/2"

PRESSURE/TEMPERATURE RATING

Fig. 775 - 10 bar at 120°C
Fig. 776 - 10 bar at 110°C

MAXIMUM DISCHARGE PRESSURE

2.5 bar

SPECIFICATION

Brass body and cover.
Polypropylene float.
EPDM seals.
WRAS Approved product to 85°C

BSP parallel thread.

Fig. 776 Shut-Off Valve option available in size 1/2".

Fig. 775 size 3/8" & 1/2" supplied with Plastic Cap.

Fig. 775 size 3/4" - 1" supplied with Hygroscopic Cap.

Hygroscopic Cap:

This contains a fibre washer which, under normal working conditions remains dry and allows air to escape. In the event of water leakage, the fibre swells and minimises any water leakage from the air vent to prevent damage.

DIMENSIONS & WEIGHTS

Nom Size	in	Fig.775				Fig.776 1/2"
		3/8	1/2	3/4	1	
A	mm	48	48	48	48	48
B	mm	79	79	86	86	96
C	mm	11	11	11	11	11
Weight	kg	0.18	0.18	0.18	0.18	0.23

